

# **Impairment Awareness**

**(eTrain Code DUI0083)**

## **Session 2**

**Impaired Driving Section**



# Learning Objectives

- Identify medical conditions, which may mimic alcohol and/or drug impairment
- Improve your ability to recognize suspects who may be impaired and when you encounter such suspects, *then take appropriate action*
- Learn about the seven drug categories

# **This Training Will NOT...**

- **Important: this training will NOT qualify you to perform the functions of a Drug Recognition Expert, investigator, or a law enforcement officer.**

# **Identifying the Effects of Drugs on the Human Body is Dependent in part on:**

- **Recognizing changes in behavior**
- **Recognizing observable signs and symptoms related to an impaired individual**

# **This Session Will...**

- **Provide a general overview related to the 7 separate drug categories and how they affect the body in *basic* terms**
- **Provide generalized behavior patterns related to the 7 categories of drugs**

# What is a Drug?

- A drug is any substance that, when taken into the human body, can impair the ability of the person to operate a vehicle safely.



WHICH IS A DRUG?





# Medical Conditions Which May Mimic Drug Impairment

- Head Trauma
- Stroke
- Diabetes
- Conjunctivitis
- Shock
- Multiple Sclerosis
- Other Conditions



# **Potential Medical Conditions**

# Head Trauma

- Disorientation
- Confusion
- Lack of coordination
- Slowed responses
- Speech impairment
- Pupils may be noticeably different sizes, or one eyelid may droop
- Eyes may not track together

# Stroke

- Markedly unequal pupil sizes
- Paralysis or weakness on one side of the body
- Slurred speech, facial droop
- Confused, frightened

# Diabetes

- Confused or non-responsive
- Sweat profusely
- Cold, clammy skin
- Rapid, weak pulse
- May require immediate medical attention

# Conjunctivitis

- An inflammation of the mucous membrane that lines the inner surface of the eyelids giving a red, bloodshot appearance of the conjunctiva of the eyes

# Pupil Size

- Large (dilated)
- Small (constricted)
- Normal

# Pupil Size

▣ Pupil size will be affected by several categories of drugs, and also by some medical conditions or injuries.

▣ Drugs causing pupil dilation:

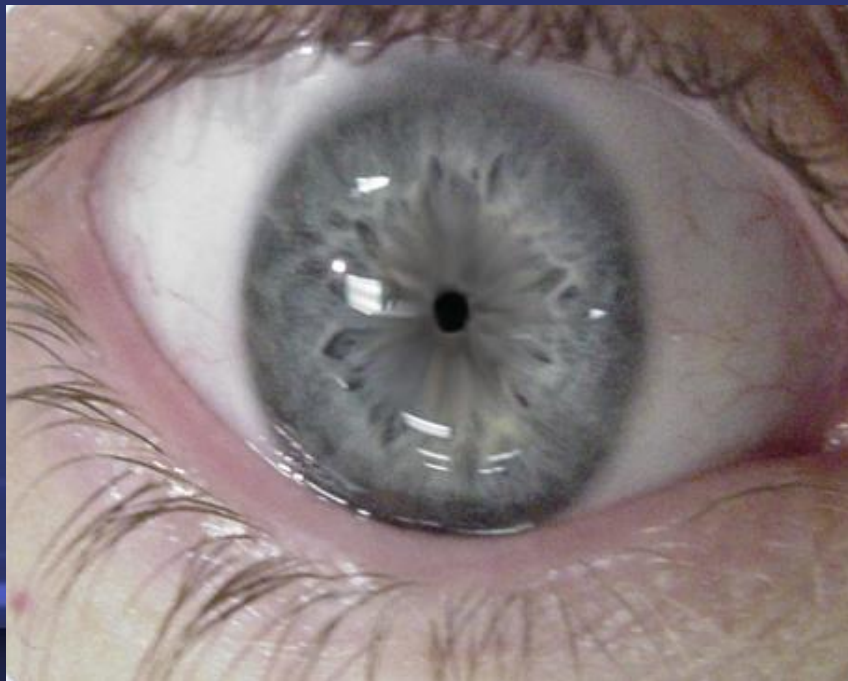
- **CNS stimulants**
- **Hallucinogens**
- **Cannabis**





# Pupil Size (Cont.)

- If the pupils are noticeably constricted then the possibility exists that the subject could be impaired by a **narcotic analgesic**



# **Drug Categories and Their Observable Effects**

- **Central Nervous System Depressants**
- **Central Nervous System Stimulants**
- **Hallucinogens**
- **Dissociative Anesthetics**
- **Narcotic Analgesics**
- **Inhalants**
- **Cannabis**

# Central Nervous System (CNS) Depressants

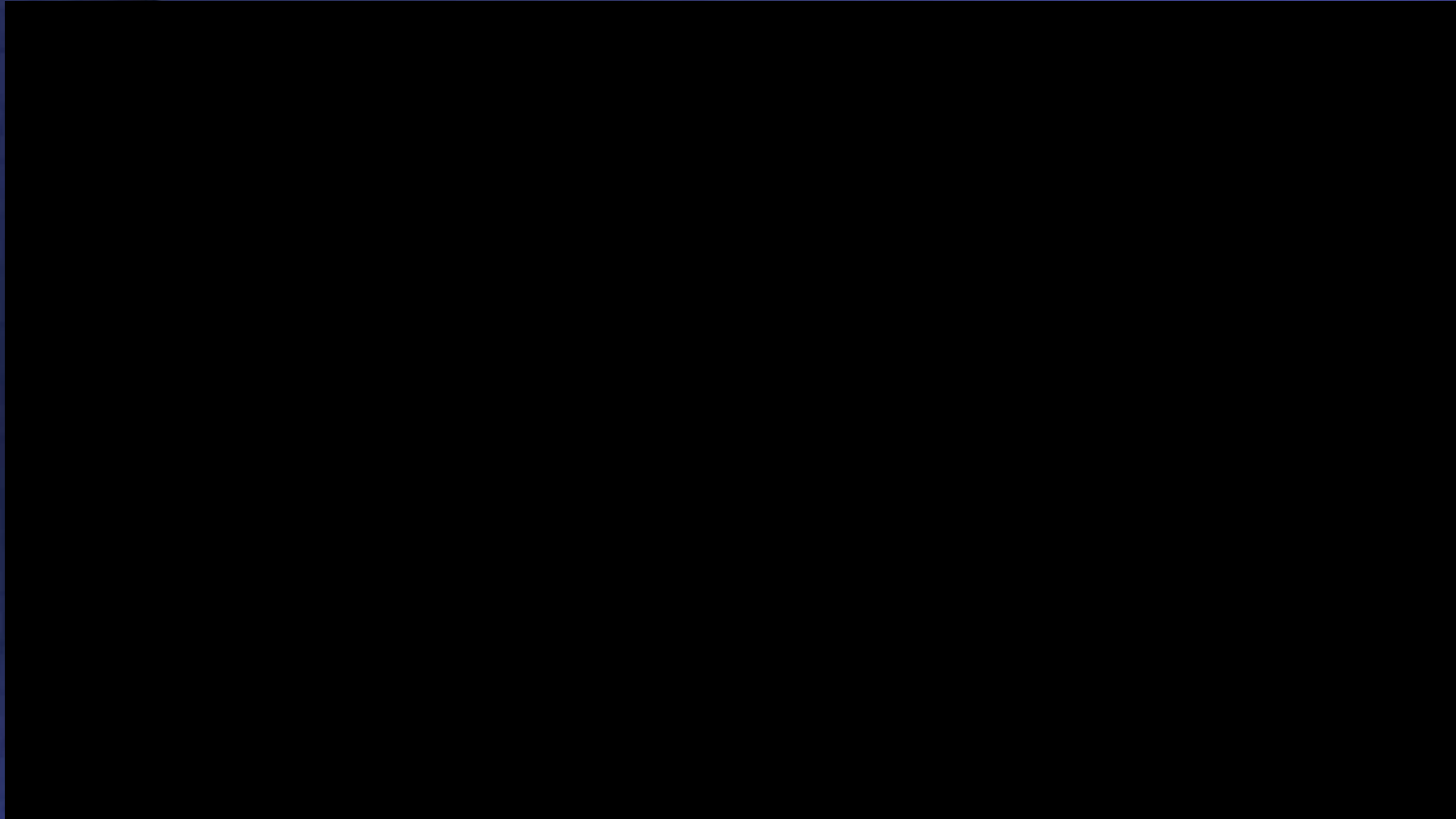
- Alcohol
- Barbiturates (Secobarbital)
- Non barbiturates (GHB/Soma)
- Anti-Anxiety  
Tranquilizers (Valium/Xanax)
- Anti-Depressants (Prozac/E
- Muscle relaxants



# Indicators of CNS Depressant Influence



# I've only had TWO!





# Central Nervous System (CNS) Stimulants

- Cocaine
- Amphetamines
- Methamphetamine

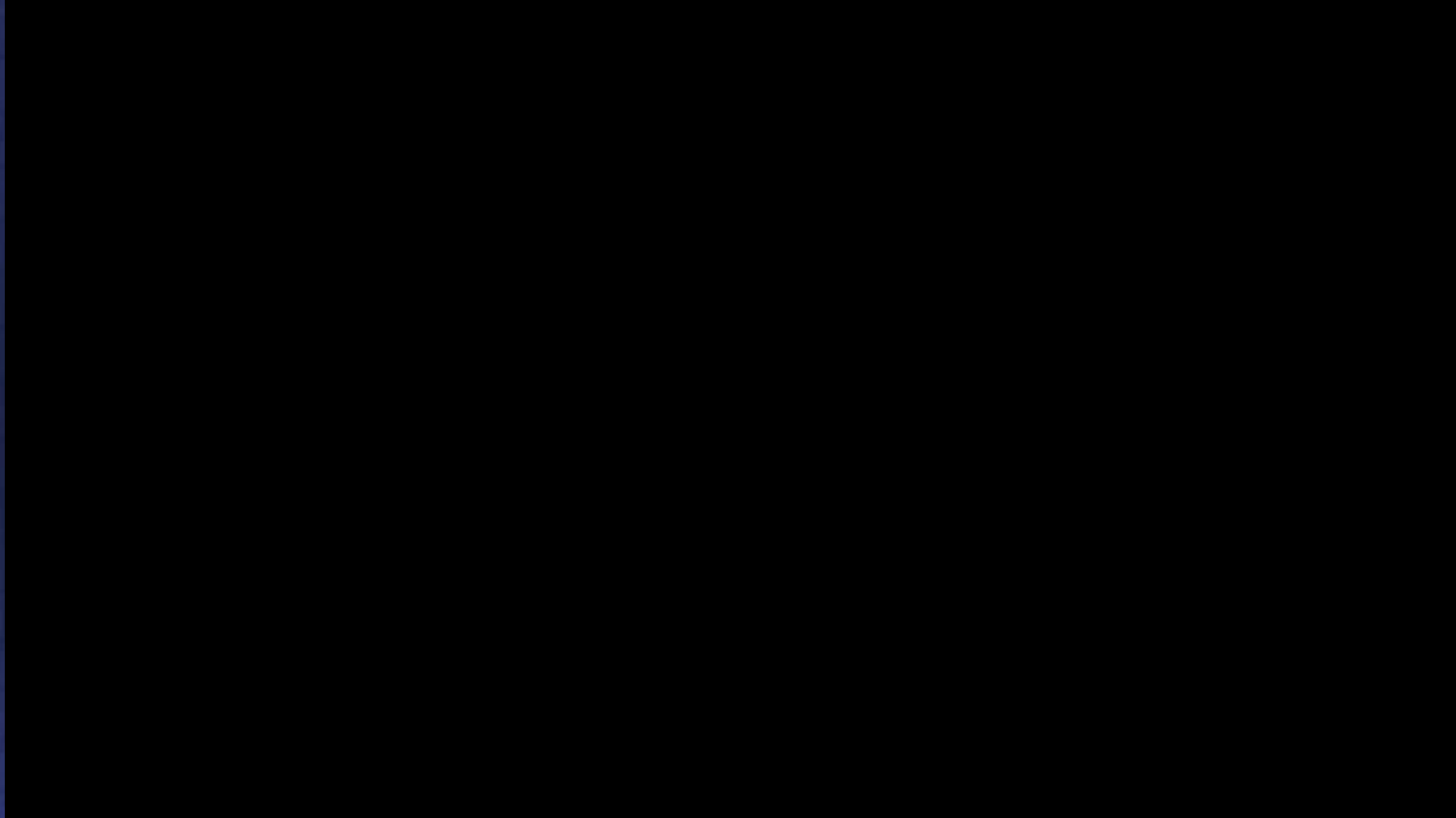


# **Indicators of CNS Stimulant Influence**

- **People under the influence of CNS Stimulants tend to be hyperactive, indicated by nervousness, extreme talkativeness and an inability to sit still**
- **They also are usually unable to concentrate, or to think clearly for any length of time**



# This is why you don't do drugs....



# Hallucinogens

- Peyote
- Salvia Divinorum
- LSD
- MDMA (Ecstasy)



# Indicators of Hallucinogen Influence

- Hallucinations
- Dazed appearance
- Body tremors
- Uncoordinated
- Perspiring
- **Disorientation**
- **Paranoia**
- **Difficulty in speech**
- **Nausea**
- **Piloerection**
- **(goose bumps)**

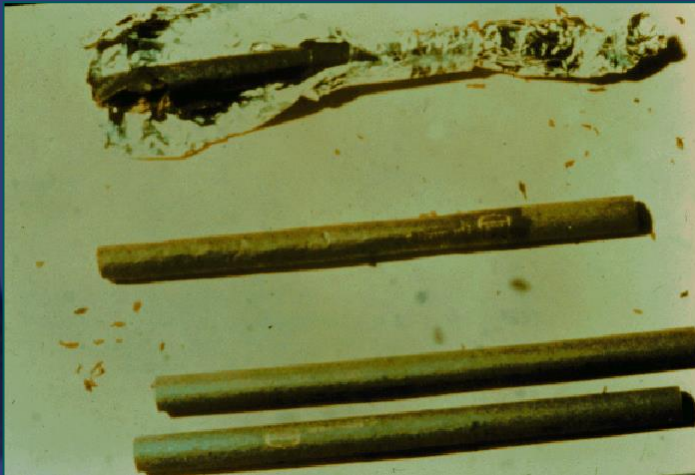
# Molly

<https://www.youtube.com/watch?v=8xL-pBl-yXc>



# Dissociative Anesthetics

- Phencyclidine (PCP)
- Ketamine
- Dextromethorphan





# **Indicators of Dissociative Anesthetic Influence**

- **Warm to the touch**
- **Perspiring**
- **Blank stare**
- **Repetitive speech**
- **Incomplete verbal responses**
- **Confused**
- **Muscle rigidity**
- **Possibly violent & combative**

# You're going to need some help!

<https://www.youtube.com/watch?v=0QgyNjCPWQ8>





# Narcotic Analgesics

- Heroin
- Morphine
- Codeine
- Synthetic Opiates (e.g., Demerol, Methadone, Fentanyl)

# **Indicators of Narcotic Analgesic Influence**

- **“On the nod”**
- **Droopy eyelids**
- **Depressed reflexes**
- **Dry mouth**
- **Facial itching**
- **Low, raspy speech**
- **Fresh puncture marks may be evident**

# On the nod....

<https://www.youtube.com/watch?v=prAfT1Btpyo>



# Inhalants

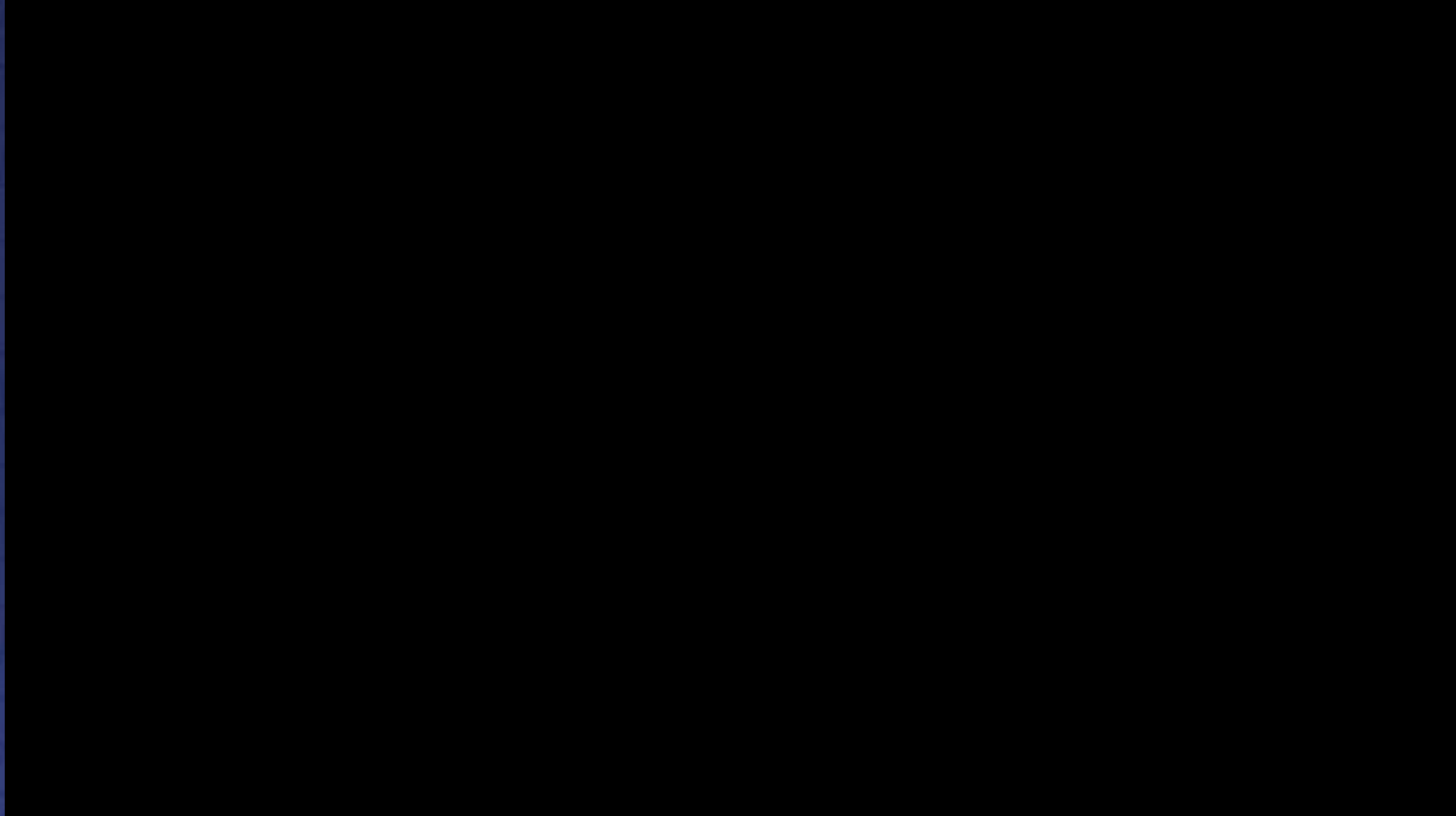
- Glue
- Paint
- Gasoline
- Aerosol sprays
- Nitrous Oxide
- Ether
- Amyl Nitrate



# Indicators of Inhalant Influence

- **Disorientation**
- **Slurred speech**
- **Residue of substance on face, hands, clothing**
- **Confusion**
- **Possible nausea**

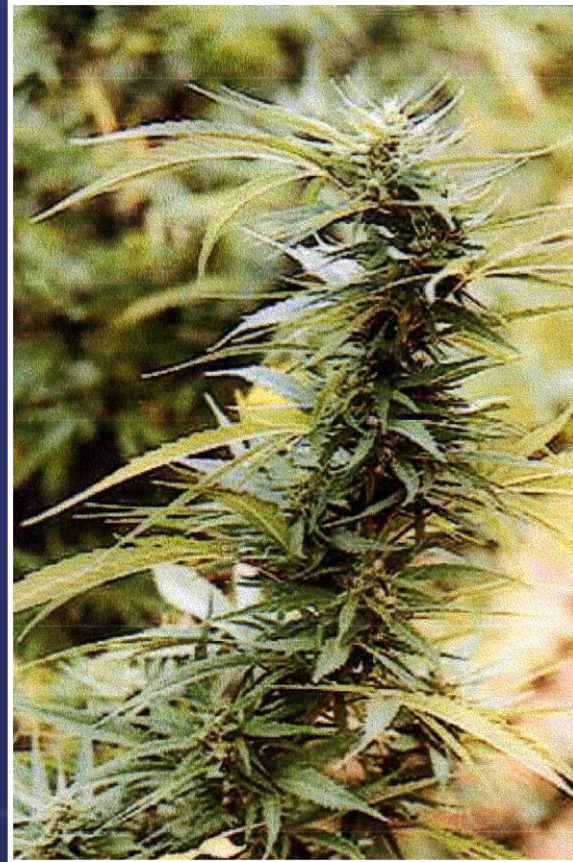
# HUFFING





# Cannabis

- Marijuana
- Hashish
- Hash oil





# Indicators of Cannabis Influence

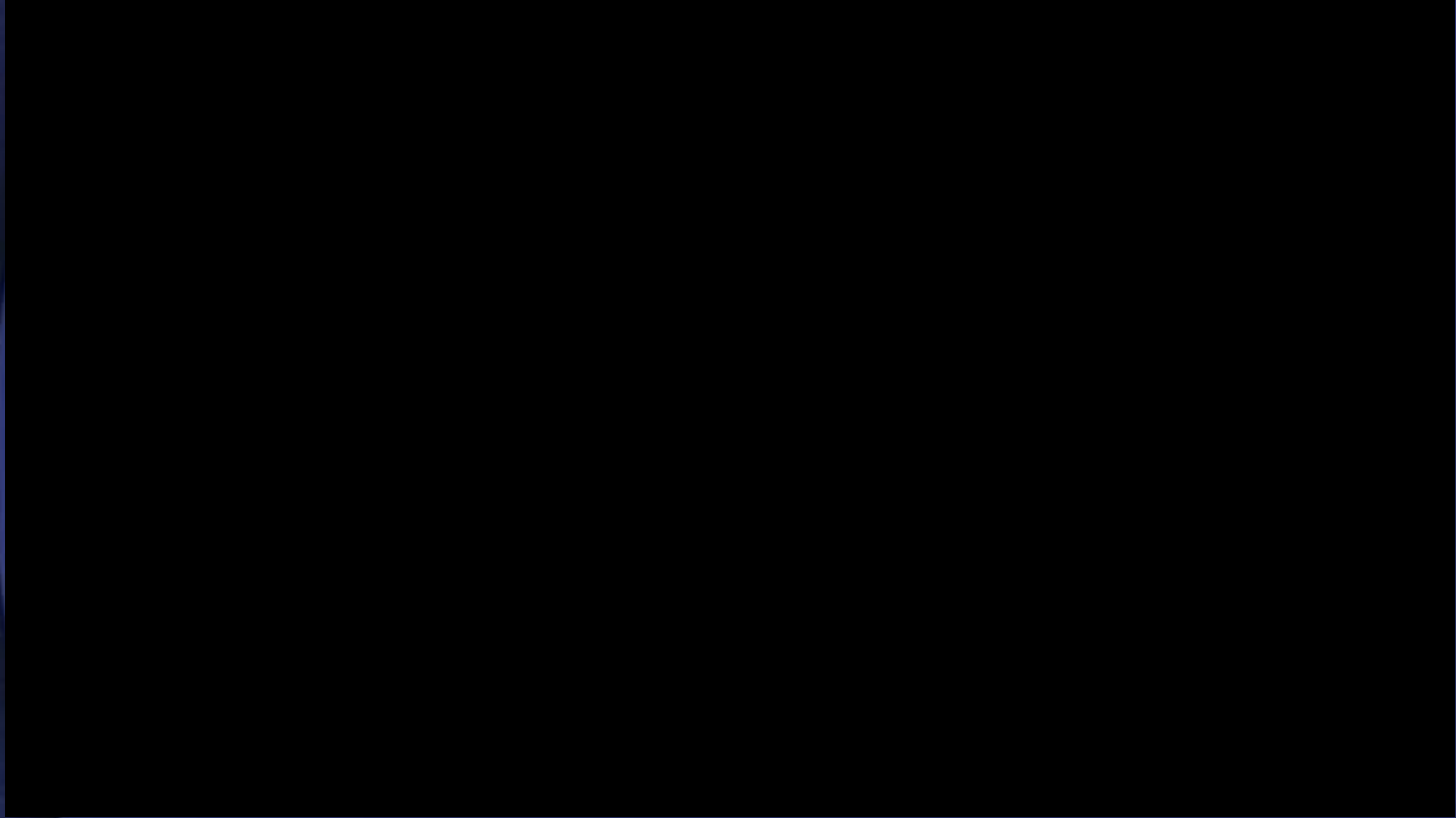
- **Marked reddening of the Conjunctiva (white part of the eyeball)**
- **Body tremors**
- **Odor of marijuana**
- **Disoriented**
- **Relaxed inhibitions**
- **Difficulty in dividing attention**

# Incomplete thoughts

<https://www.youtube.com/watch?v=oeF6rFN9org>



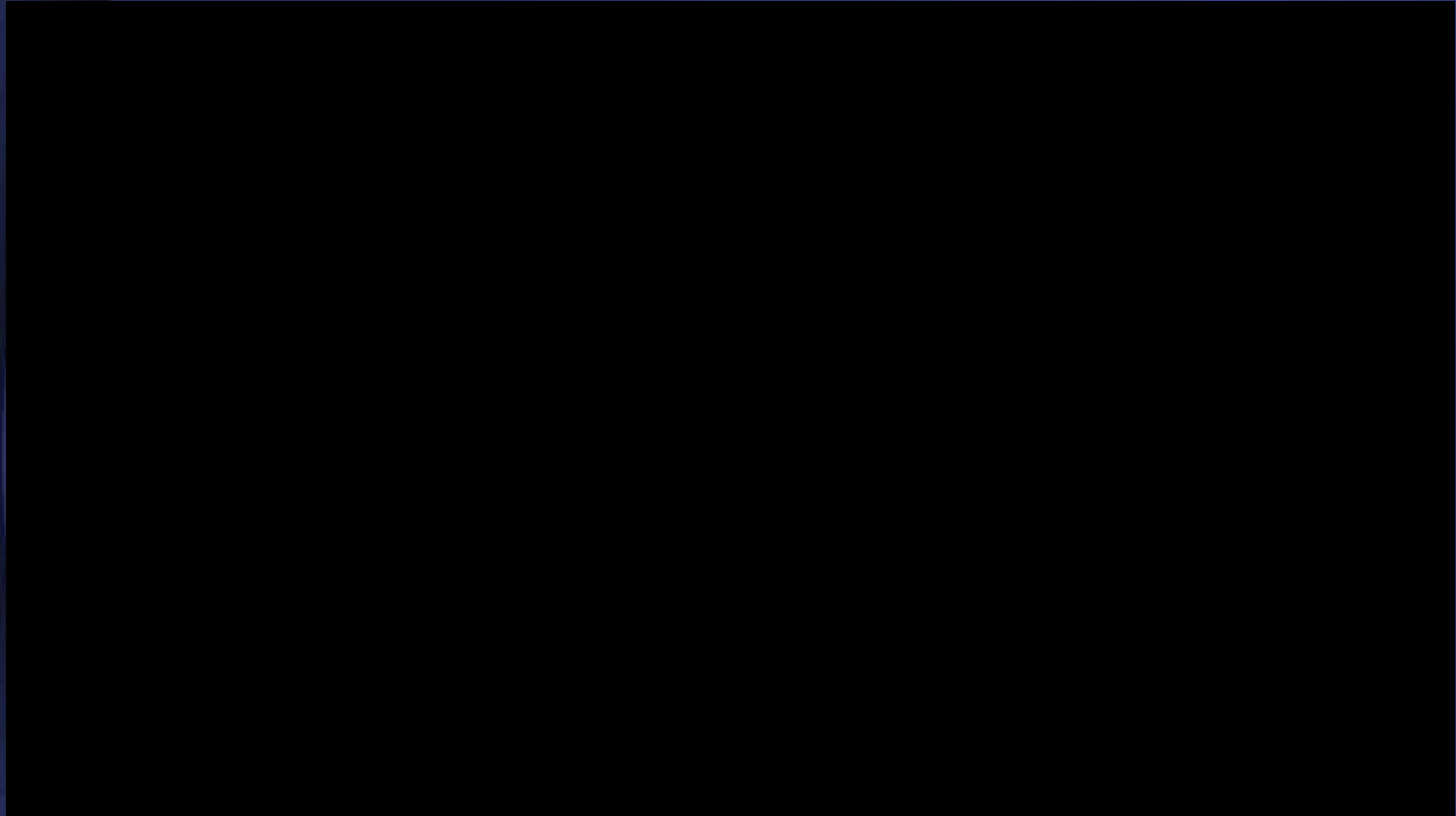
# Spot the DUI Driver!



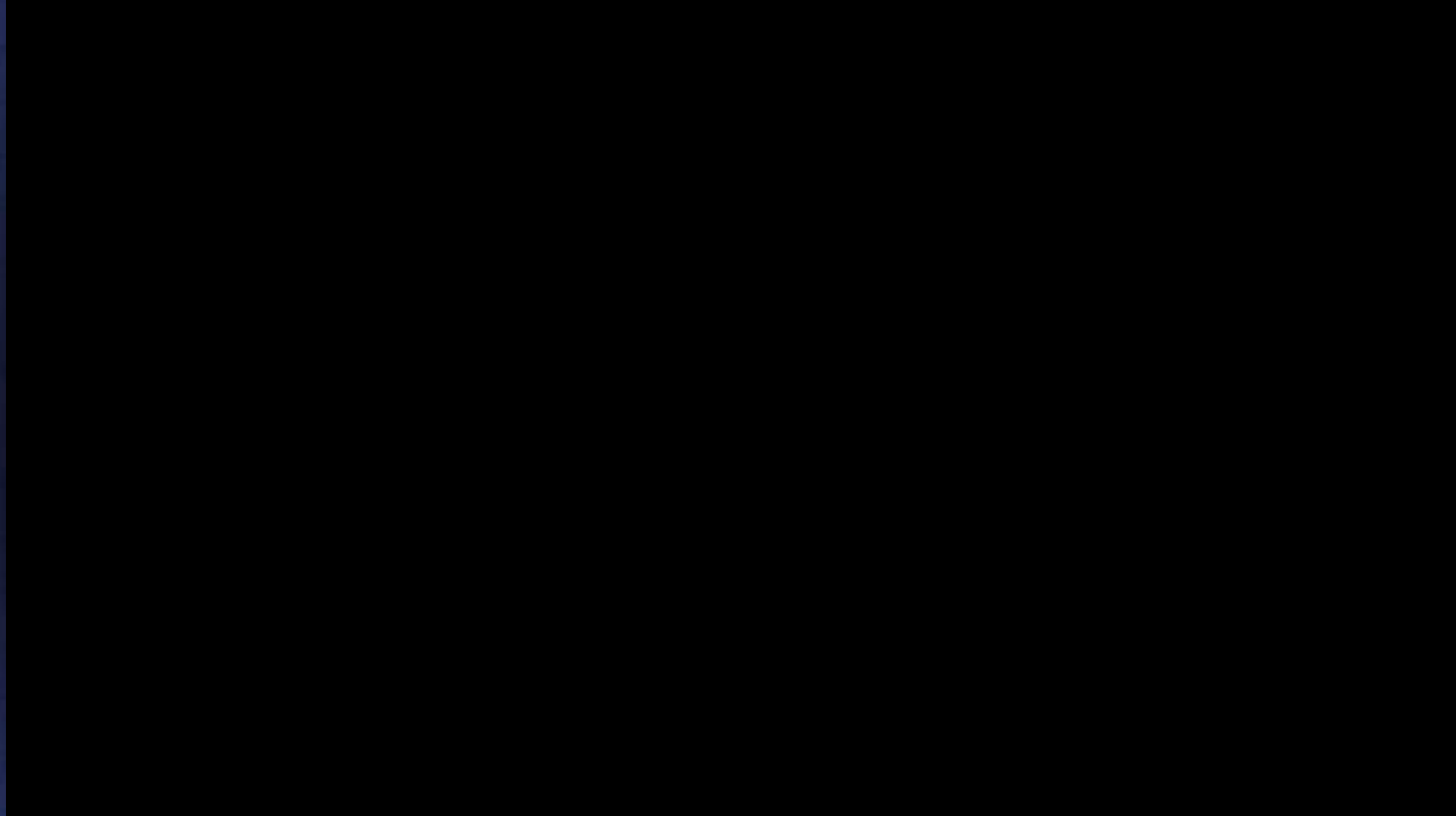
# Combinations of Drugs

- **“Poly“ derives from the Greek word for "many"**
- **In the Los Angeles Field Study (1985), 81 of the 173 suspects (47%) in the Los Angeles Field Study had alcohol in combination with one or more other drugs**

# Drunk Vs Stoned



**Do you have ANY medical condition I might confuse with intoxication?**





# Notification and Report(s)

- Once the notion or suspicion of impairment has been established:
  - ▣ Report the incident immediately\*
    - ▣ WSP Radio/911/Commissioned staff
    - ▣ Supervisor/peers/other office staff

Top priority is employee/public safety.

It is not okay to do nothing or ignore the situation.



# Can you tell me the....

- Be prepared to author a narrative of the event.

## If a crime or DUI:

- Did you see driving?
- Did the suspect drive away?
- License Plate?
- Direction of travel?
- Other suspects?
- Vehicle description
- Who, What, Where, When, and How ?



# Questions?

## Closing comments.

